

TO-92 Plastic-Encapsulate Transistors

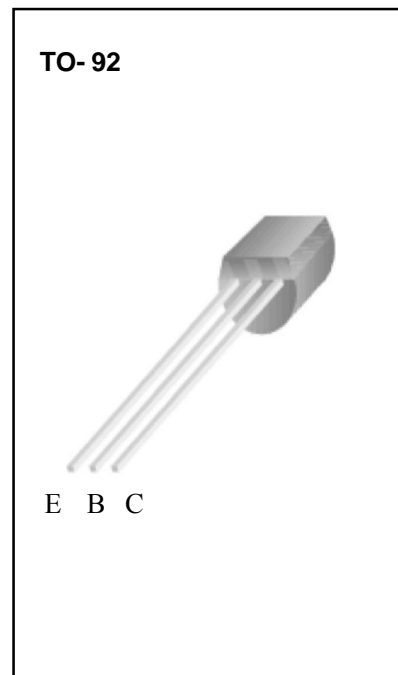
TRANSISTOR(PNP)

Features

- Complimentary to SS8050
- Collector Current: $I_C = -1.5A$

Limiting Values (Absolute Maximum Rating)

Symbol	Parameter	Value	Unit
V_{CB0}	Collector-Base Voltage	-40	V
V_{CE0}	Collector-Emitter Voltage	-25	V
V_{EB0}	Emitter-Base Voltage	-5	V
I_C	Collector Current	-1.5	A
T_j	Junction Temperature	150	°C
T_{stg}	Storage Temperature	-55~+150	°C



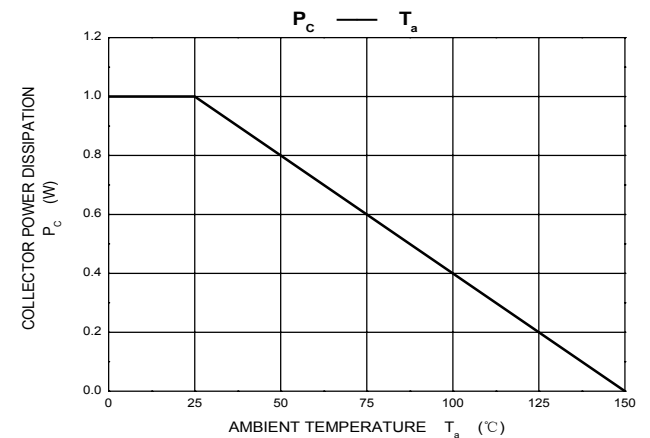
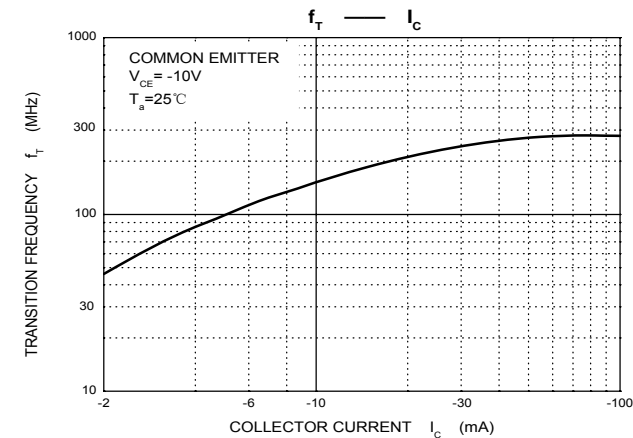
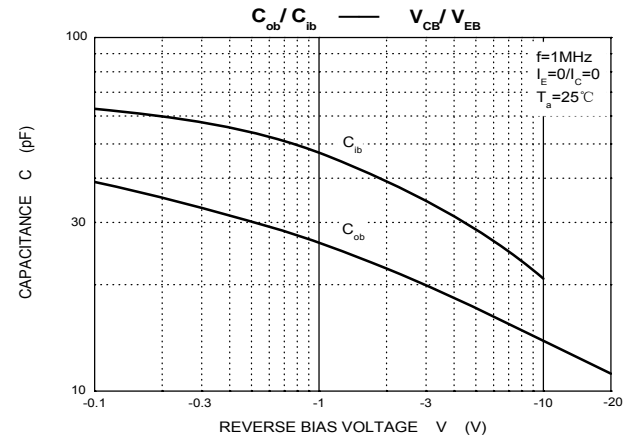
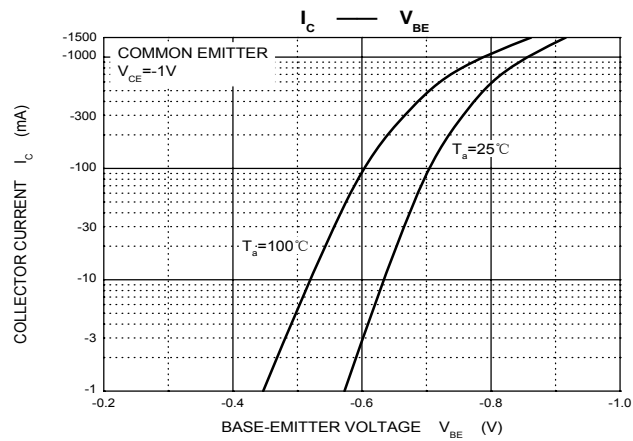
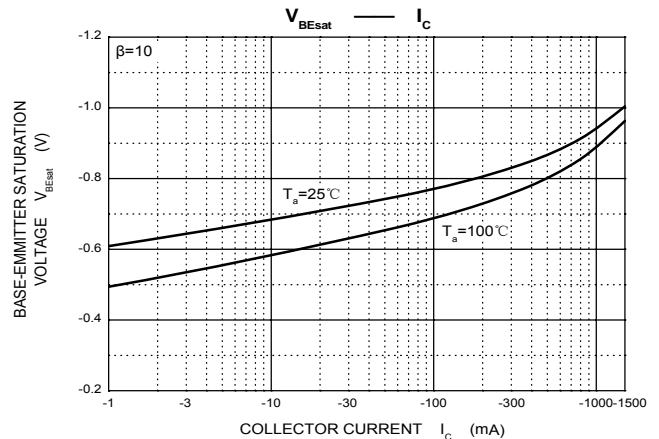
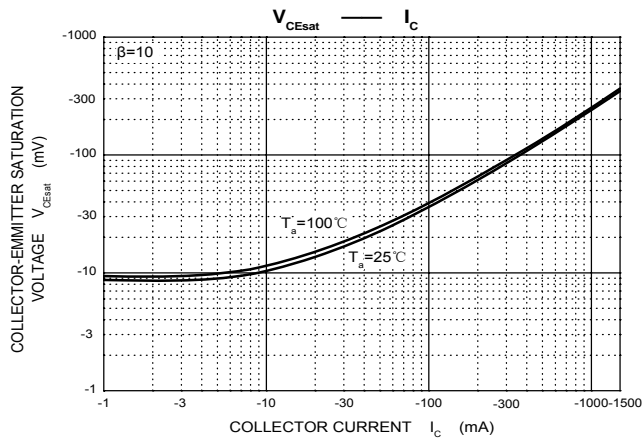
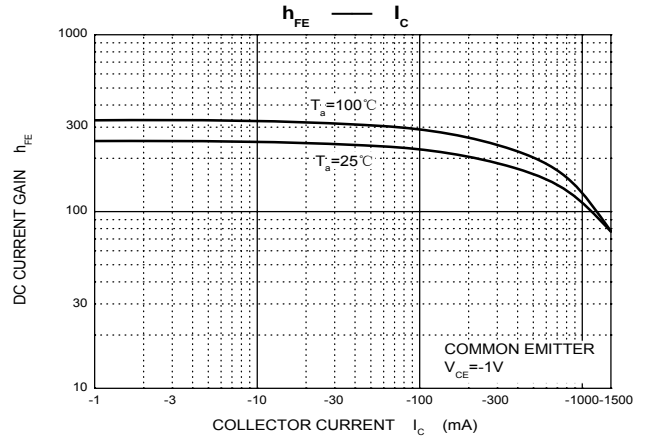
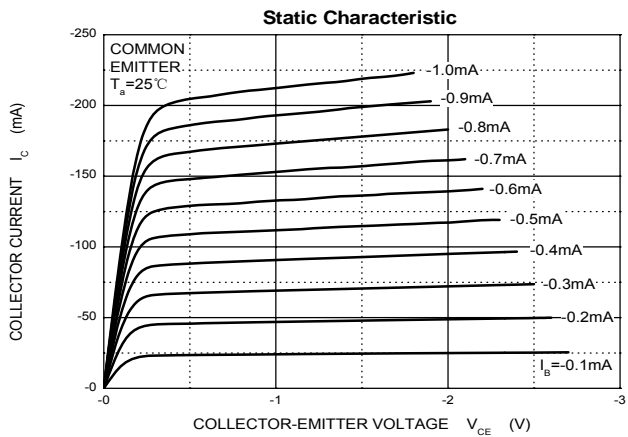
Electrical Characteristics (T=25°C Unless otherwise specified)

Parameter	Symbol	Test conditions	Min	Typ	Max	Unit
Collector-base breakdown voltage	$V_{(BR)CB0}$	$I_C = -100\mu A, I_E = 0$	-40			V
Collector-emitter breakdown voltage	$V_{(BR)CE0}$	$I_C = -0.1mA, I_B = 0$	-25			V
Emitter-base breakdown voltage	$V_{(BR)EB0}$	$I_E = -100\mu A, I_C = 0$	-5			V
Collector cut-off current	I_{CB0}	$V_{CB} = -40V, I_E = 0$			-0.1	μA
Emitter cut-off current	I_{CE0}	$V_{CE} = -20V, I_E = 0$			-0.1	μA
Emitter cut-off current	I_{EB0}	$V_{EB} = -5V, I_C = 0$			-0.1	μA
DC current gain	$h_{FE(1)}$	$V_{CE} = -1V, I_C = -100mA$	85		400	
	$h_{FE(2)}$	$V_{CE} = -1V, I_C = -800mA$	40			
Collector-emitter saturation voltage	$V_{CE(sat)}$	$I_C = -800mA, I_B = -80mA$			-0.5	V
Base-emitter saturation voltage	$V_{BE(sat)}$	$I_C = -800mA, I_B = -80mA$			-1.2	V
Base-emitter voltage	$V_{BE(on)}$	$V_{CE} = -1V, I_C = -10mA$			-1	V
Out capacitance	C_{ob}	$V_{CB} = -10V, I_E = 0mA, f = 1MHz$			20	pF
Transition frequency	f_T	$V_{CE} = -10V, I_C = -50mA, f = 30MHz$	100			MHz

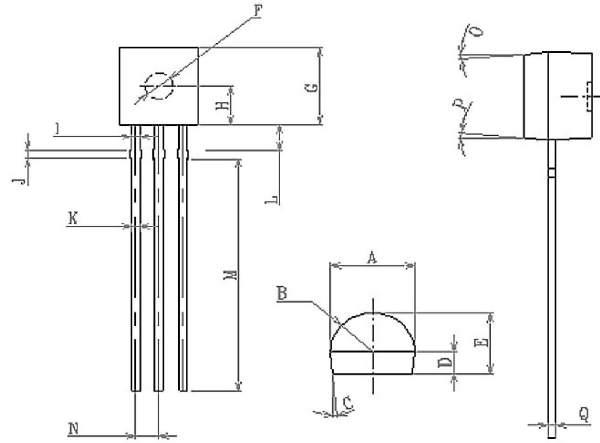
CLASSIFICATION OF $h_{FE(2)}$

Rank	B	C	D	D3
Range	85-160	120-200	160-300	300-400

Typical Characteristics



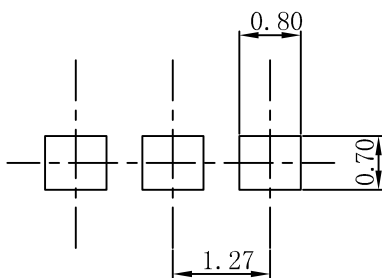
TO-92 Package Outline Dimensions



SYMBOL	MIN	MAX	SYMBOL	MIN	MAX
A	4.1	4.3	K	0.36	0.56
B	R2.0	R2.2	L	1.35	1.45
C	4.1		M	12.00	12.5
D	1.1	1.2	N	1.24	1.3
E	3.13	3.33	O	5°	
F	Φ1.48	Φ1.52	P	5°	
G	4.4	4.6	Q	0.37	0.39
H	2.2	2.3			
I	0.36	0.56			
J	0.5	0.6			

单位: mm

TO-92 Suggested Pad Layout



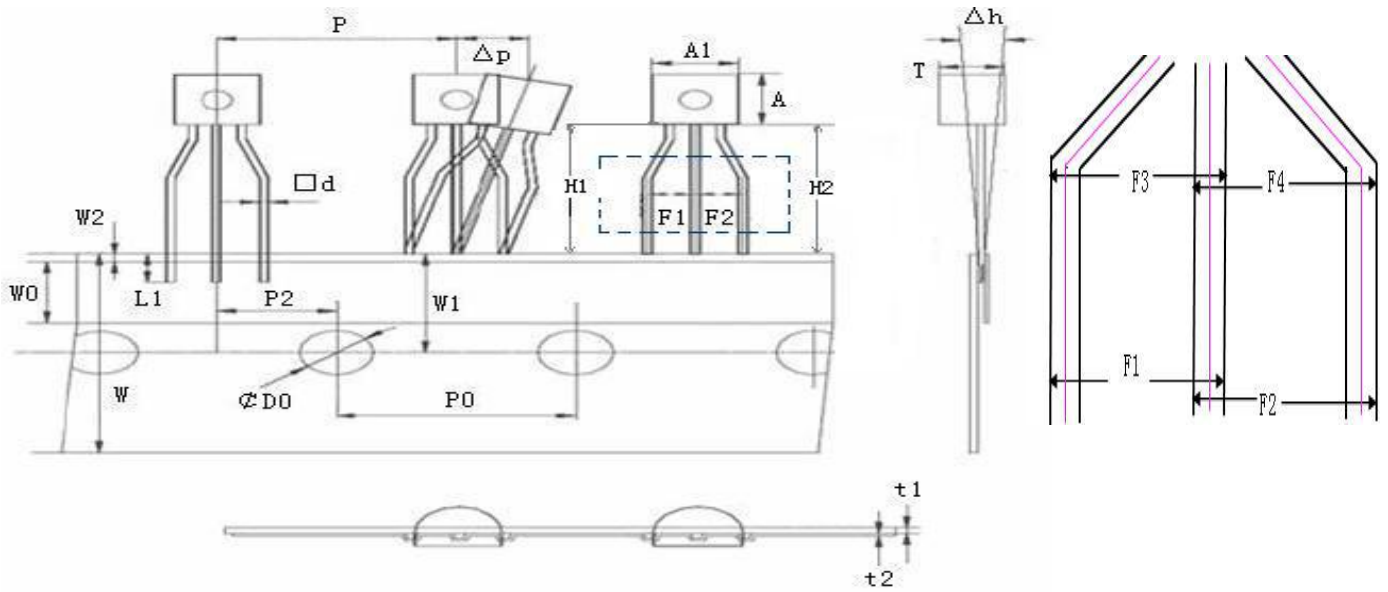
Note:

1. Controlling dimension: in millimeters.
2. General tolerance: $\pm 0.05\text{mm}$.
3. The pad layout is for reference purposes only.

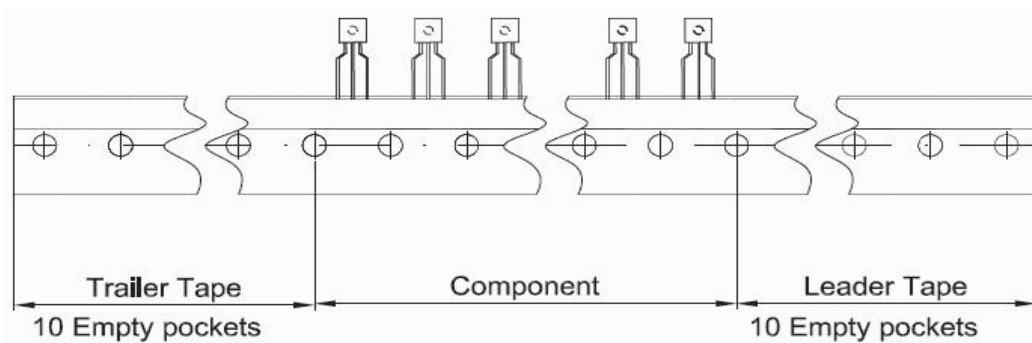
NOTICE

JSHD reserve the right to make modifications, enhancements, improvements, corrections or other changes without further notice to any product herein. JSHD does not assume any liability arising out of the application or use of any product described herein.

TO-92 Tape and Reel



Symbol	mm			Inches		
	Min	Nom	Max	Min	Nom	Max
A1	4.1	4.2	4.3	0.171	0.176	0.180
A	4.4	4.5	4.6	0.184	0.188	0.192
T	3.13	3.23	3.33	0.131	0.134	0.139
□d	0.36	0.45	0.56	0.015	0.018	0.022
L1	2.5	—	—	0.098	—	—
P	12.4	—	13	0.488	—	0.512
P0	12.5	12.7	12.9	0.492	0.5	0.508
P2	6.05	6.35	6.65	0.238	0.25	0.262
F1,F2	2.75	3.00	3.25			
F3,F4	2.75	3.00	3.25			
F1-F2	—	—	0.4			



Package	Box	Box Size(mm)	Carton	Carton Size(mm)
TO-92	2000PCS	343×158×42	20000PCS	470×358×180